

A.G. Bell School Local School Council

Ellen Rosenfeld, Parent - Chairperson

Tracy Boemmel, Parent - Vice Chair

Monica Drane, Community - Secretary

Monica Drane was a Bell parent for 15 years and served in many different capacities as a volunteer, including as a parent representative on the LSC, the co-chair of the Fine Arts Committee, and the facilitator of the Parent Forum. She has three children who graduated from Bell and she lives in the neighborhood.

Peter Barash, Teacher

This is my eleventh year at Bell Elementary and my fourteenth year of teaching overall. I teach 7th and 8th grade Social Studies. I am also in my second term on the LSC as a teacher representative. I earned a B.A. in History from the University of Wisconsin-Madison and a Master's in Education from DePaul University where my focus was on grades 6-12 Social Sciences. Finally, I completed the National Board Certification process in Early Adolescent Social Sciences in 2010. It is an honor to be on the LSC and to have the opportunity to represent my colleagues in the process of strengthening our school and community.

Ruth Crisler, Parent

My husband Michael and I have a second and fifth grader enrolled in Bell's options program. Like many Bell families, our kids ride the bus to and from, extending their day and creating other challenges, but we are grateful to have access to a school of Bell's caliber and do not view our physical distance from the school as an excuse to be less involved.

As a Bell parent, I routinely chaperone field trips, attend school fundraisers and parent forums, and am proud to volunteer on Bell's Social Emotional Learning committee. In my professional life, I operate See Spot Run, the dog care and training business I founded in 2000, and currently chair the Ethics Committee of the International Association of Animal Behavior Consultants. On weekends, I practice Tae Kwon Do with my son and daughter, the latter of whom now outranks me.



I attended public schools in New Jersey prior to entering University of Chicago, and am a strong believer in quality public education. Today, we face fiscal crises on both the city and state level, the impact of which has already been felt at Bell. These and other problems demand creative, collaborative solutions that serve the interests of all our children, while continuing to honor and support Bell's unique mission and identity. I take my role as a Local School Council representative seriously, and am always ready to listen to the concerns of Bell parents, teachers, students, and community members.

Alexander Dee, Community

Carol Fleishman, Parent

Credentials:

- Unique perspective -1 child in Options program, 2 children in Neighborhood program, deaf sister-in-law: great appreciation for Deaf program, inclusion and sign language opportunities
- 20+ years in Sales, Marketing, Emerging Technologies, Digital and Social Media
- Experience in government/policy - HS Senior Class President, College Internship in DC, Several Corporate Leadership positions - developed onboarding and mentoring program for new hires, evaluated and implemented Salesforce.com, etc.
- Education - BA - University of Wisconsin-Madison, MBA - DePaul
- Skill Set - Negotiation, Collaboration, Consensus Building, Setting Priorities, Strategy
- Passion and enthusiasm to give back to my family, Bell School and the community



Challenges / Opportunities:

- Better integration of all programs at Bell School (Options, Neighborhood, Deaf)
- Technology access and support to keep Bell and our kids ahead of the curve
- Monitoring and developing the CIWP - streamlined strategic planning process
- Fair evaluation of Bell's school principal
- Budget issues ensure funding addresses areas of concern while maintaining fiscal health (sports programs, other extracurricular activities, reasonable classroom sizes, emotional/social learning and development, technology, etc.)

I look forward to bringing fresh energy, a new perspective and your ideas and concerns to the Bell LSC with a goal of collaboration, representation and creative solution development.

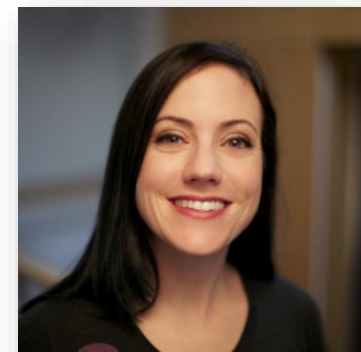
Michael Flomenhoft, Parent

Erin Kieronski, Teacher

Sarah Ma, Parent

I live in North Center with my husband, Linwood Ma, two daughters, and dog Crash. Our oldest began in the neighborhood kindergarten program and moved to the options program in first grade, she is now in the fifth grade. Our third grader is in the neighborhood program.

I grew up in the Northwest suburbs attending public schools, later completing my Bachelor's degree in Chemical Engineering from the University of Illinois. Post college I was a Chemistry teacher for two years with the Peace Corps and received intensive language (Swahili) and cultural/community training and life experience. I later worked for Abbott as a validation and then process engineer. During this time, I was a tutor with Cabrini Connections.



When my oldest was born, I became a stay-at-home mom which finally gave me a chance to reconnect with my passion for music, studying voice. I now sing weekly at St. Benedict's and with local bands (Beta Dogs and Simpletones), and have just finished a two-year term as the treasurer for The Park Ridge Chorale, a nonprofit community choir. I am the owner of LYRIQ Music School at 1906 W Irving Park Rd, which is set to open October 2016. I am an active member of the Bell Fine Arts Committee (FAC) and co-chair of Bell's Bands for Bell annual fundraiser at Martyrs'.

I am committed to Bell. I embrace the concepts of evidence-based education. I have a deep seated sense of community gained through work with the Peace Corps. I want to ensure that Bell maintains its standard of educating the whole child. Most of all, I am excited to work with the amazing people of this LSC!

Kathryn Schmidt, ESP